



GREATER PIKE COMMUNITY FOUNDATION

For Good. Forever.

ANNUAL REPORT
2022



MESSAGE FROM THE BOARD CHAIR

I am pleased to present the Greater Pike Community Foundation 2022 Annual Report. This year marks the 10th anniversary of the foundation, and it has been an honor to serve the community through the various programs and initiatives we have supported over the years.

In 2022, we provided financial support to 47 nonprofit organizations that provide our community vital services, including education, social services, culture, and arts programs. We successfully brought together nonprofit leaders at our annual workshop and helped nonprofits strengthen their long-term financial stability by establishing organizational endowments.

This year, we assisted 21 students with financial support for pre-kindergarten tuition, awards for graduating high school seniors, and ongoing support for college students.

Watch for our progress as we partner with Pike County to implement the Pike County Emergency Services Initiative, bolstered with generous donations from individuals and special county funding and as we formalize a Pike County Medical Fund, which will help make health care in our community more readily available.

We are grateful to all of our donors, volunteers, and partners who have supported the work of the foundation, without which we would not be able to make such a positive impact. I also want to thank Jenni Hamill, who has worked with Greater Pike since 2014 and served as our first executive director since 2017. She is responsible for much of Greater Pike's success.

Looking ahead, I am excited to welcome Jess Zufall as the incoming executive director, as we continue working to make a difference in the lives of those in our community. We are always looking for new ways to make a positive impact, and we welcome your ideas and suggestions.

Thank you for your support.



Gail Shuttleworth

OFFICERS AND DIRECTORS

Gail Shuttleworth, Chair
Edson Whitney, Vice Chair
Sean Strub, Secretary
Peter Maio, Treasurer

BOARD OF DIRECTORS

Omar Brown
Christa Caceres
Lorraine Gregory
John "Duke" Schneider
Justin Pfaff
Maggie Niles
Tim Smith
Luke Turano
Carol Witschel
Jennifer Liu
Edgar Brannon

OUTGOING EXECUTIVE DIRECTOR

Jenni Hamill

INCOMING EXECUTIVE DIRECTOR

Jessica Zufall

DESIGN & PRINTING

Bailey Design & Advertising

COVER & BACK COVER PHOTO

Edson Whitney

As of February 2023



GREATER PIKE
COMMUNITY FOUNDATION

PEOPLE WHO CARE... CAUSES THAT MATTER

YOUR GIFT WILL SUPPORT THOSE LOCAL PROGRAMS AND NON-PROFIT ORGANIZATIONS THAT ARE MOST IMPORTANT TO YOU.



MESSAGE FROM OUR OUTGOING EXECUTIVE DIRECTOR

Looking for some inspiration in 2023? Might I suggest having a conversation with someone about what it means to leave a legacy? You may pose the question over a cup of coffee, or glass of wine, or during a long car ride having exhausted your favorite playlist. And then, for an extra dose of 'uplifting', try following that question with one about what you envision your legacies to be.

Over the years, I have had the pleasure of discussing this topic with many generous members of our community in relation to charity. The conversation may have been triggered as a part of estate or will planning, to memorialize a loved one, or maybe simply to 'pay it forward' to the next generation, and beyond.

No conversation about charitable legacies is ever the same. Consider the many ways you could plan to be charitable, and the causes and organizations that you could support. Some of my conversations have resulted in the establishment of scholarships to share an educational or professional passion, or the passion of a loved one. Other conversations have resulted in donor funds directed at solving problems such as food and housing insecurity or improving access to medical and emergency care. And, although the diversity of charitable interests seems magnificently endless, one similarity is equally inspiring: a desire to make a difference, 'For Good. Forever'.

So, at a gathering with a friend, or dinner with a parent, or perhaps best of all, while talking to a child, consider starting the conversation of a legacy and long-lasting charity with someone, and get your dose of inspiration right on the spot.

Best Wishes to All in 2023!
Jenni



Jenni Hamill
Jenni Hamill



MESSAGE FROM OUR INCOMING EXECUTIVE DIRECTOR

It is always incredible to me that decisions we make on a daily basis, land us in places that we never thought we would be. When I graduated college, I was presented with two job offers. One was to be a cold caller in a technology start-up, and the other was to be a case manager in a group home for thirteen men with developmental disabilities.

I chose the latter.

In my almost thirty-year career as a nonprofit executive and professional, I have experienced all facets of the work in this sector. I have administered medication in a group home, I have held the hands of survivors of domestic violence as they make the courageous decision to escape, and I have surfed tandem with children with Autism on the beaches of Long Island. I have also managed over \$100 million budgets while mobilizing teams of thousands of people in de-centralized environments across the United States.

Landing at Greater Pike Community Foundation as your next Executive Director is a natural progression for my career, as it is an ecosystem where I can leverage almost three decades of nonprofit sector experience to meet the continued and arising needs of Pike County.

I am coming to Greater Pike Community Foundation energized and with an entrepreneurial spirit. A spirit and enthusiasm, I have been told, is contagious. I hope you feel this from me. I am open to all of your thoughts and ideas on how we can, together, advance the mission of the Greater Pike Community Foundation to improve the quality of life for everyone, especially our most vulnerable.

I look forward to working with all of you. I will continue to be in touch, and please be in touch with me, too.

For Good. Forever.

GREATER PIKE
COMMUNITY FOUNDATION



Jess Zufall
Jess Zufall, PhD



FINANCIAL REPORT

2021 Assets*

Cash	\$	448,304
Investments at Fair Market Value	\$	3,960,797
Other Assets	\$	311,354
Total Assets 12/31/2021	\$	4,720,455
Total Assets 12/31/2020	\$	3,843,762
Increase		23%

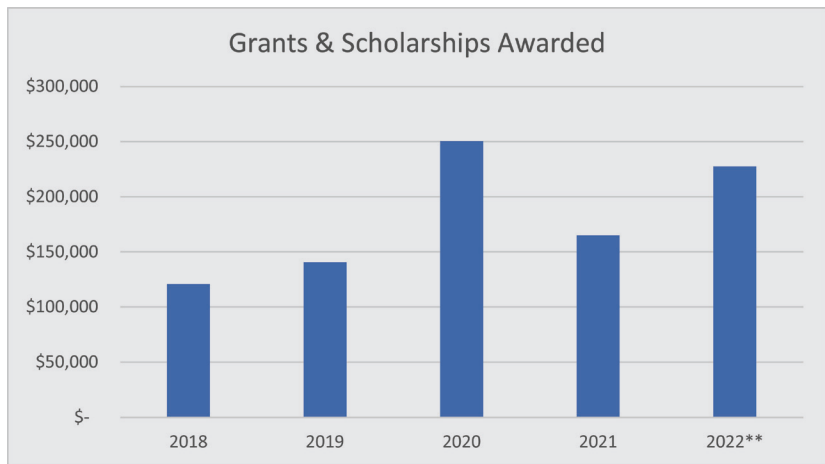
* Based on December 31, 2021 Audited Financial Statements



**Unaudited as of 12/31/2022

2021 Revenues*

Total Contributions and Grants	\$	764,394
Realized/Unrealized Investment Income & Gains	\$	156,490



**Actual grants, scholarships and PreK tuition assistance



INVESTMENTS

All of Greater Pike Community Foundation’s invested assets are in a single co-mingled pool. The invested assets in the pool are managed by Vanguard Institutional Investment Advisors using diversified low-cost fixed-income and equity mutual funds, primarily index funds but some actively managed funds as well. Vanguard acts as co-fiduciary with GPCF on the portfolio. GPCF’s investment strategy is designed to maximize returns while limiting risk with a long-term (5-10 year) investment horizon.

Performance data is provided by Vanguard Institutional Investment Advisors.

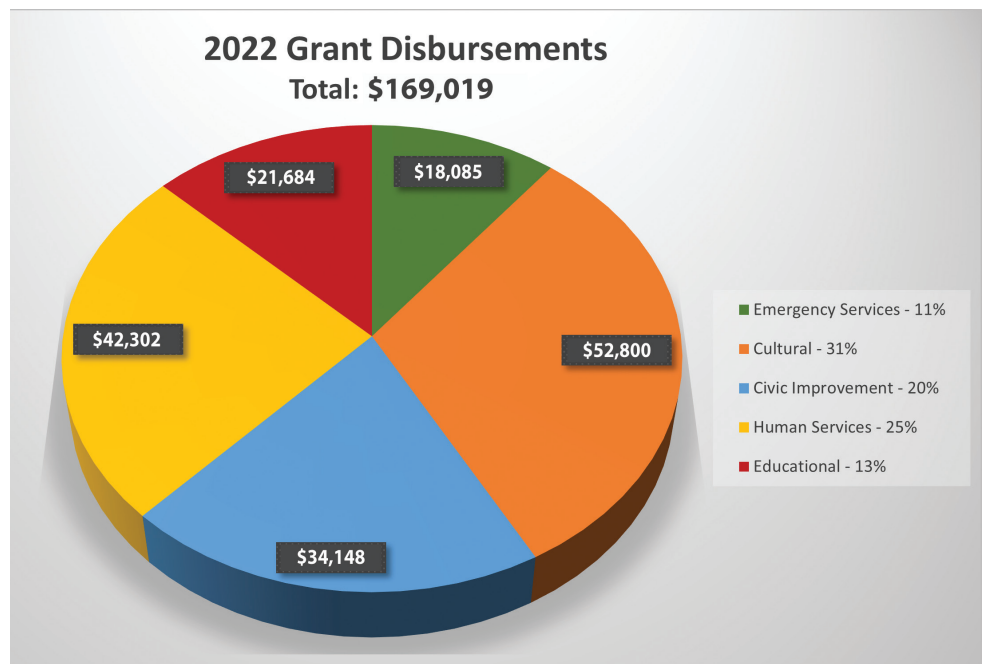


FINANCIAL INFORMATION

GPCF’s Audited Financial Statements for the year including the auditor’s report, notes to the financial statements and the most recent filed IRS Form 990 are available for review by contacting Greater Pike Community Foundation at info@greaterpike.org or calling 570.832.4686.

Granted Organizations for 2022

- American Readers Theatre
- Basha Kill Area Association
- Black Bear Film Festival
- Center for Developmental Disabilities
- Church in the Hills
- Community Foundation of Orange & Sullivan / A Single Bite
- Delaware Valley 2000 Educational Fund
- Delaware Valley School District
- Dingmans Ferry Theatre
- Ecumenical Food Pantry
- Family Promise of Monroe County, Inc.
- Farm Arts Collective
- GAIT Therapeutic Riding Center
- Good Cheer Food Pantry
- Green Trees Early Learning Center
- Growing Lackawaxen
- Hanna Q. Dance Company
- Heart of Matamoras
- Holy Trinity Food Pantry
- Kindred Spirits Arts Program
- Make a Wish of PA
- Milford Borough
- Milford Community House
- Milford Enhancement Committee
- Milford Fire Department
- Milford Fire Department Relief Association
- Milford Garden Club
- Milford Historic Preservation Trust
- Milford Lions Club
- Milford Music Festival
- Milford Readers & Writers Festival
- National Canoe Safety Patrol
- Opera! Pike! Park!
- Peter's Valley School of Art
- Pike Autism Support Services (PASS)
- Pike County Commissioners
- Pike County Hands of Hope
- Pike County Humane Society
- Pike County Public Library
- Pocono Environmental Education Center
- Pocono Arts Council
- Sero Project
- St. Ann's Food Pantry
- Tamerlaine Farm Animal Sanctuary, Inc.
- Tri-State Chorale
- Upper Delaware Preservation Coalition
- Westfall Township Fire Department



”

“The funding will help us improve the Biddis and Kiehl Memorial Parks, which serve as gathering places for remembering our fallen heroes, first responders, and founding fathers, or at times, simply a location to take a minute to reflect, read, or enjoy a conversation.”
— Maria Farrell, Milford Borough Council Parks and Recreation Chair.

”

“We’re extremely grateful for the funding because we are seeing a steady increase in the number of families coming to the food pantry. So far this year we are averaging about 60 families per week, which is a big increase for us, and we see new families each week.”
— Nancy Potter, Ecumenical Food Pantry Director

”

We’re so grateful to Greater Pike and the Snyder Fund for understanding the need for an emergency shelter and their support of our efforts to help the Pike County community.”
— Enid Logan, Executive Director of Family Promise of Monroe County, on plans to open an emergency shelter for at-risk and homeless children and their families in Pike County.

”

“The Westfall Township Volunteer Fire Department can now equip all fire apparatus with cellular-enabled iPads. The new capability allows for improved situational awareness for officers and members.”
— Westfall Township Assistant Fire Chief Kyle Innella



Some of the 2022 Richard L. Snyder Fund grant recipients

For a complete list of nonprofits we support, please visit our website at www.greaterpike.org/1grant-recipients



Barbara J. Buchanan Fund—Supports an annual mini-grant program for local non-profit community organizations supporting arts and culture, basic human needs, health, families, education, and the environment.

***Edson D. Mosher, Jr. Fund**—Supports various local causes addressing food insecurity, health and welfare and children, as well as the St. Jude Children's Research Hospital.

Edward and Gertrude Schneider Memorial Fund—Supports the Milford Enhancement Committee, which works to make Milford a better place to live, visit, and do business.

Fund for Greater Pike—Provides support, as directed by Greater Pike's board of directors, for urgent or unexpected needs, including natural disasters, as well as for Greater Pike's administrative requirements and needs that fall outside of the usual grant cycle or funding parameters of any specific fund.

***GAIT-Advisory Council Endowment Fund**—Established to benefit GAIT Therapeutic Riding Center, to improving the quality of life of children and adults with special needs through equine activities and therapies. Provides financial assistance to special needs participants in GAIT's programs, enabling them to have a more independent life in society.

***Green Trees Strong Roots Fund** -- Supports the mission of Green Trees Early Learning Center, Inc. and its affiliated agencies.

***I Care About Autism Fund** -- Established to support the charitable, scientific and educational purposes of Pike Autism Support Services and its affiliated agencies.

Kontizas Fund—Supports arts and culture, animal welfare, public safety and emergency services, environmental stewardship and education, child victims of domestic violence, the Karen Ann Quinlan Hospice and Good Shepherd Episcopal Church in Milford.

Lillian and Harvey M. Bessonett Sr. Fund—Supports charities recommended by fund's donor advisor. Charities and causes include (but are not limited to) human services, food security, housing needs and animal welfare organizations.

Milford COVID Relief Fund—Established to address the health and economic effects of the coronavirus. The fund has provided support to nonprofits that are trying to meet the urgent needs arising out of the Covid pandemic affecting Milford's residents, business owners, and those who work in Milford.

Milford Enhancement Committee Maintenance Endowment—Established for the exclusive benefit of the Milford Enhancement Committee with the purpose to preserve and enhance Milford, Pennsylvania's invaluable heritage and special character for the benefit of residents, businesses, and visitors alike.

***The O'Neil Family Fund** was created by Charles and Celeste O'Neil to support various local causes and organizations including historic preservation, autism support services and food insecurity in the Greater Pike area and elsewhere as recommended by the donors.

Pedranti Family Charitable Fund—Supports community enhancement, health and welfare, medical research and education, historic preservation, arts and culture with an emphasis on the Greater Pike area.

**Denotes new in 2022*

***The Peter and Kathy Maio Fund**—Supports environmental issues as well as organizations addressing housing and food insecurity in the Greater Pike area and elsewhere as recommended by the donors.

The Petersheim Fund—Supports donor-recommended local entities across the nonprofit, religious, and community-building spectrum.

***Pike County Emergency Services Initiative Fund**—Established to provide funding to support training programs for Pike County emergency services, agencies and organizations. Became Permanent Fund in 2022.

Ralph F. Berry Memorial Fund—Supports charities of the donor advisor's choice in memory of Ralph Berry and the causes he held near to his heart during his lifetime.

Richard L. Snyder Chair of Conservation Studies Fund—Established to honor the memory of Richard L. Snyder, a community benefactor and great conservationist, this fund provides a yearly stipend to the Delaware Valley School District to create and maintain a Richard L. Snyder Chair of Conservation Studies.

Richard L. Snyder Fund—Supports an annual open grant program which funds non-profit organizations conducting work in the following areas: maintaining and enhancing the public areas of the Borough of Milford; sponsorship of local arts, culture, festivals, and events; and health and wellness, particularly in the areas of multiple sclerosis, HIV, LGBTQ issues, and domestic violence.

The Richard Rhodes River Rescue Fund—Income from the "RRRR" fund is allocated to the National Canoe Safety Patrol for the purchase of equipment, training, and other necessary items to fulfill their mission to provide rescue and assistance, as well as safety education.

Safe Haven Legacy Fund—Established by Safe Haven of Pike County, Inc., to provide grant awards to nonprofit organizations in Pike County assisting victims of domestic violence and sexual assault to find and relocate to permanent (as opposed to emergency) safe housing.

Schneider Family Fund—Created by John "Duke" and Joan Schneider to provide meaningful support for causes and charities they recommend.

***Shuttleworth Fund**—Created to support various local causes and organizations in the Greater Pike area and elsewhere as recommended by the donor.

Thomas and Jean Hoff Fund—Established to primarily benefit the greater Pike County community and, specifically, the Pike County Public Library.

Walt Edwards Ashenfelter Fund for Performing Arts—Established in memory of Walt Edwards Ashenfelter to support the musical entertainment in Milford that Walt loved.

William and Deborah Hookway Fund—Supports various local charities in the Sussex County, NJ, area and elsewhere, as recommended by the donors. Charities and causes include the Sussex County YMCA and animal welfare organizations.

Xavisean Fund—Designed to promote civic engagement, historic preservation, social justice, healthcare, and cultural endeavors in the Greater Pike region.

”

“Years from now I want to be able to look back and see that we made a difference and that our contribution is sustainable into the future.”

— Charles Petersheim, The Petersheim Fund



Types of FUNDS

Designated Funds: This type of fund provides a wonderful way to support one or more specific nonprofit organizations. Grants will be made annually to the specific organization(s) designated.

Donor Advised Funds: Grants from these funds are made to various nonprofit organizations, which can change from year to year, as recommended by the donor advisor who sets up the fund.

Field of Interest Funds: Grants are made to organizations in a defined area of community interest, as determined by the donor, to support a broad charitable goal, such as improving education, supporting cultural activities, or addressing the opioid epidemic.

Organizational Funds: Any nonprofit can benefit from this type of fund in which Greater Pike administers an organizational endowment to help the organization fulfill its mission in perpetuity.

Scholarship Funds: These funds assist students with their education and career goals. Scholarship funds can be created as a memorial to or in honor of a loved one or for students meeting defined eligibility criteria, and the grant can support any area of academic need, including tuition, books, or dorm expenses.

With all Funds, the donor receives a tax-deductible charitable contribution, without having to immediately identify the nonprofit beneficiaries. For complete descriptions and to make secure online donations to any of these funds, please visit our website at https://greaterpike.org/fund_list/ and scroll down to the fund name for the link.



Noodlers Turn Pasta into Dough

Proceeds from the sale of locally made Noodlers Handmade Pasta, an enterprise of Shohola's Greenbaum family, are donated to the Foundation.



GAIT-ACE Endowment Fund

GAIT-ACE Endowment Fund organizers put the "fun" in fundraisers with an evening of line dancing.



Emergency Services Fund Gets Boost

In 2022, the Pike County Commissioners allocated \$50,000 to endow the Pike County Emergency Services Initiative Fund, administered by Greater Pike Community Foundation. The fund's intent is to provide adequate support to qualified Pike County emergency services agencies and other nonprofit emergency response organizations for critical training programs.

Endowing the fund will ensure sustainability by creating a permanent income stream that will also facilitate growth

Since its implementation in 2019, the fund has saved local EMS agencies EMT course fees, supported classes at the Pike County Training Center and produced new EMTs from the Program, the majority of whom are serving Pike County

After the endowment was announced, the PCESI Fund received donations from the commissioners, county solicitor, chief clerk and individuals. Greater Pike contributed an additional \$1,000 as part of its 10-year anniversary, 10-for-10 challenge for organizational endowment funds.



Artist for Education

Proceeds from the sale of original paintings by Reggie Cheong-Leen (such as this) are donated to the Reggie Cheong-Leen and Peter Spielhagen Scholarship Fund. Remaining on display at the ARTery in Forest Hall, a 2022 exhibition generated \$5,000 for the fund.



ORGANIZATIONAL ENDOWMENT FUNDS HELP SUSTAIN NONPROFITS

Four nonprofit organizations participated this year in a unique initiative that will help them gain long-term financial stability. As a way to mark Greater Pike’s 10-year anniversary, these organizations opened or made permanent an Organizational Endowment Fund and welcomed a one-time \$1,000 match from Greater Pike.

- **Pike Autism Support Services – I Care About Autism Fund**
- **Pike County Emergency Services Initiative (transitioned into a Permanent Fund)**
- **Green Trees Strong Roots Fund**
- **GAIT-Advisory Council Endowment Fund**

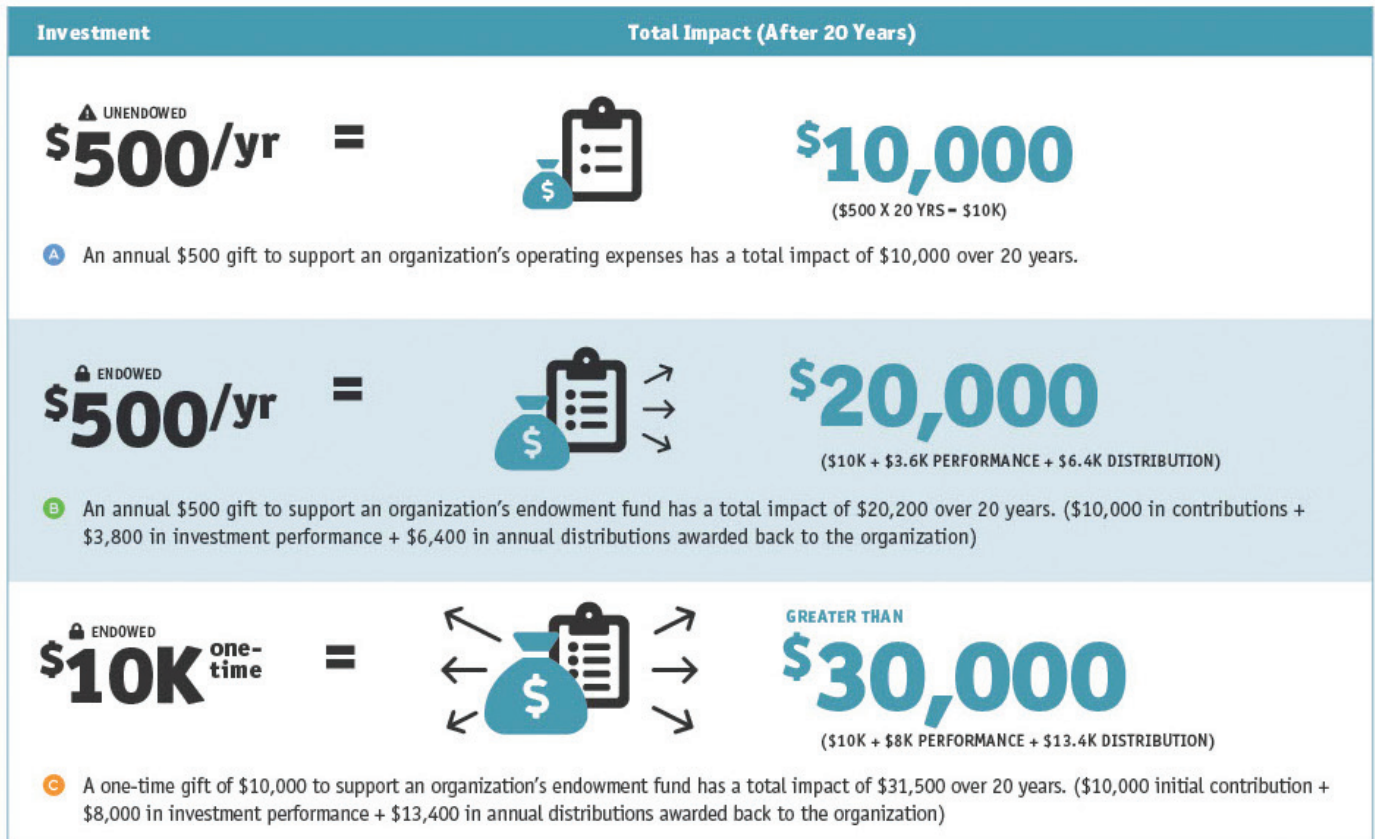
Nonprofits can find themselves strained by constantly seeking grants and donations and unable to plan for their financial future. This unique financial planning opportunity offers organizations a chance to improve long-term financial health as their fund grows.

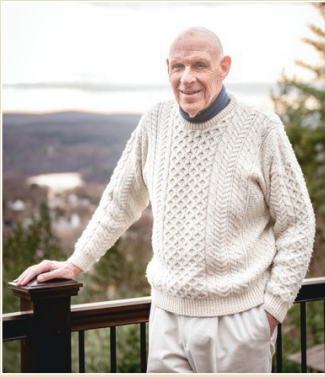
This nest egg helps nonprofits gain financial stability For Good. Forever.

Interested organizations can open an Organizational Endowment Fund by first completing a planning form found at www.greaterpike.org and can learn more by emailing jesszufall@greaterpike.org or calling 570-832-4686.

Why Give to Endowment?

A gift to endowment is a gift that lasts forever. Here a breakdown of how a gift given three different ways can impact your favorite nonprofit:





Honoring Community Members

Every year, Greater Pike awards the Barbara J. Buchanan Community Service Award and the Richard L. Snyder Business Leadership Award to outstanding individuals who reflect the civic and business leadership exemplified by the late Barbara Buchanan and Richard Snyder, both founding members of the Greater Pike Community Foundation Board of directors.



This year, longtime community volunteer and civic leader Bill Kiger received the Barbara J. Buchanan Community Service Award. Bill exemplifies the spirit of volunteerism and giving back to our community, not only for the extensive number of organizations he has volunteered with over the years, but for his tireless efforts at community support.

The Arlene Quirk Team of Keller Williams Real Estate was recognized with the Richard L. Snyder Business Leadership Award, given for outstanding corporate philanthropic leadership in the community. The Arlene Quirk team, which includes Arlene, Shaun Burger and Karen Zingone, donated a percentage of its earnings to various Greater Pike funds for several years.

Each honoree received a \$1000 grant to direct to the charity of their choice. Bill donated his to the Milford Fire Department and the Arlene Quirk team donated their grant to the Milford Garden Club.



GREATER PIKE LEGACY SOCIETY

For Good. Forever.

Legacy Society members wish to name Greater Pike Community Foundation as a beneficiary of a planned gift. This could be as simple as a bequest in their will and/or future charitable income in the form of annuities, charitable remainder trusts, or gifts of life insurance or retirement plan assets.

Launched in 2021, the Legacy Society continues to grow and includes members of our community who believe in giving back in perpetuity. Legacy gifts can support the donor's preferred charitable causes long after the original donor is gone. This is a powerful and meaningful gesture.

Legacy Society members can be an inspiration to others. Introductions are made at garden party receptions and Legacy Society members, except those who prefer anonymity, are recognized in Greater Pike publications.

Consider becoming a member and joining like-minded individuals dedicated to the future well-being of our region and of future generations.

LEGACY SOCIETY MEMBERS

- Harvey M. Bessonett
- William & Deborah Hookway
- Rosann B. Kalish
- Richard & Rebecca Lindsey
- Kirk C. Mackey
- Peter & Kathy Maio*
- Sean Strub & Javier Morales
- Edson D. Mosher, Jr.*
- Nicholas H. & Margaretta G. Niles
- James Pedranti
- Nancy & Peter Pinchot
- Gail Shuttleworth & Jeff Rosalsky
- Joan & John "Duke" Schneider
- Edson and Barbara Whitney*

**Denotes new members this year.*



SCHOLARSHIPS

Scholarship awards totaling \$42,549, including multi-year renewals to past recipients, were distributed in 2022 to Delaware Valley and Wallenpaupack Area High School seniors who are pursuing a variety of academic interests in colleges and universities.

Generous donors continue to support these scholarship funds, without which these talented youth might not be able to pursue their career interests.

Scholarships and Recipients

Amanda Nicole Thoenig Memorial Scholarship Fund

- *Kori Carl* — School of Visual Arts
- *Madeline Mallon* — Massachusetts College of Arts

Ann Intili Morey Art Scholarship Fund

- *Madeline Mallon* — Massachusetts College of Arts
- *Ava Nienstadt* — Dickinson College (multi-year recipient)

Art Ridley Spirit of Kindness Memorial Scholarship Fund

- *Daniella Cuccio* — University of Tampa

Kyle James Pascoe Memorial Scholarship Fund

- *Gabriel Tidridge* — Drexel University
- *Nicole Krasicki* — Desales University
- *Nathan Melnick* — West Chester University

Pike County Chamber of Commerce Memorial Gouse-Krawitz Scholarship Fund

- *Daisey Carney* — Temple University
- *Lucas Macdonough* — Marywood University

Randy Auman Memorial Scholarship Fund

- *Kori Carl* — School of Visual Arts
- *Madeline Mallon* — Massachusetts College of Arts
- *Ava Nienstadt* — Dickinson College

Reggie Cheong-Leen & Peter Spielhagen Scholarship Fund

- *Hugo Huerta* — Penn State University
- *Yoshikatsu Sumitomo* — Penn State University (multi-year recipient)

Sydney Fluck "Syd's Kids" Scholarship Fund

- *Chelsea Rude* — University of Delaware



College Dream Comes True with Multi-year Scholarship

Meet Hugo Huerta-Alcaide, this year's recipient of the Reggie Cheong-Leen & Peter Spielhagen Scholarship. This multi-year award provides up to \$20,000 each year for the higher education costs of local high school graduates who are first-generation children of immigrants and who demonstrate both academic excellence and financial need. Hugo currently is attending Penn State, University Park, majoring in Pharmacology.

"Receiving this scholarship will help me pursue my career goal in Pharmacology," Hugo said following Delaware Valley's recent graduation ceremonies. "I can focus more on studying since I assume the classes will get more challenging, and not worry about getting more work hours."

Hugo was surprised when he learned he received the award, "and also grateful since it will help me tremendously." When he told his parents, "they were extremely pleased. My parents have always helped me out and were again going to help me in college since I am the first one in my family. However, hearing the news that I would get financial help took some weight off their shoulders."

Hugo's parents immigrated from Mexico to the US in 2003 and he is the oldest of four siblings and the first in his family to attend college. He enjoys sports, cooking and reading and has been involved with National Honor Society, Future Business Leaders of America and volunteer activities.



Pre-K Scholarships

In 2022, tuition assistance for Pre-K programs was awarded to the families of nine children attending the Center for Developmental Disabilities and Green Trees Early Learning Center. Totaling more than \$16,000, the funds are made possible by contributions from The Dime Bank, Highmark Life Insurance, (a Highmark company), Wayne Bank, Honesdale National Bank and Weis Markets through the Educational Improvement Tax Credit (EITC) Program of Pennsylvania's Department of Community and Economic Development, in partnership with Greater Pike Community Foundation.



Tuition scholarship funds helped James Schrag attend the pre-K summer program at Center for Developmental Disabilities.

Detailed eligibility requirements and links to donate to any of these funds can be found on our website: [https://greaterpike.org/scholarships/Pre-K Scholarships](https://greaterpike.org/scholarships/Pre-K%20Scholarships)

Educational Improvement Tax Credit (EITC) Program for Pre-Kindergarten Scholarship Organizations – Full or partial tuition scholarships for local children attending summer or school-year programs at eligible nonprofit pre-kindergarten scholarship organizations. From a partnership among Greater Pike Community Foundation, the PA Department of Community and Economic Development (DCED), and eligible and approved businesses that receive tax credits for contributions.



MEMORIAL FUNDS

In loving memory of...

After the death of a loved one, surviving family or friends may choose to designate a charity to receive memorial gifts. **Memorial Funds** established at Greater Pike Community Foundation are usually named after the deceased and provide friends, coworkers and family members the confidence to know their gifts are eligible for tax-deductibility and will be handled responsibly.

Memorial Funds provide time for the deceased's family or friends to determine how to distribute the funds raised, rather than requiring an immediate or hasty decision to name a specific charity. Depending on the amount raised, a **Memorial Fund** might support one or more not-for-profit organizations, launch a scholarship program or be made into a permanent fund. These funds can support any tax-exempt organization in the greater Pike County area or beyond, or even Greater Pike Community Foundation itself.

A **Memorial Fund** can be established quickly and requires little paperwork. Please contact the Executive Director at 570-832-4686 or info@greaterpike.org





GREATER PIKE COMMUNITY FOUNDATION

P.O. Box 992, Milford, PA 18337

www.greaterpike.org

Email: info@GreaterPike.org

OR CURRENT RESIDENT



SURPASSING

\$1,690,000

Greater Pike Community Foundation continues to lead in community philanthropy, surpassing \$1.69 million of giving in the form of grants and scholarships since its founding 10 years ago!

In 2022, we helped our nonprofit community expand its capacity to address housing and food insecurity and to provide education, support for disabilities, animal welfare, arts and cultural events, historic preservation and emergency services. Both preschool and post-high school tuition scholarships were awarded.

CELEBRATING 10 YEARS

OF LEADING THE COMMUNITY IN PHILANTHROPY



To help Greater Pike continue its mission **For Good. Forever.** please consider making a donation to the Fund for Greater Pike, a fund that addresses unforeseen and urgent community needs.

Donations are accepted online at greaterpike.org/funds or by check made out to Fund for Greater Pike and mailed to P.O. Box 992, Milford, PA, 18337.